

# Cello CP

## Remote Monitoring of Cathodic Protection



Cello is a new family of fully-integrated wireless data loggers.

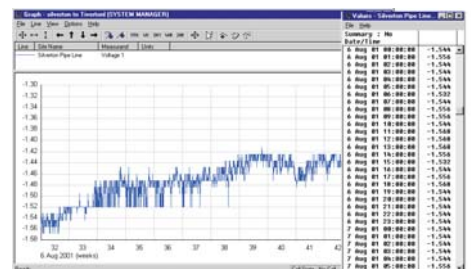
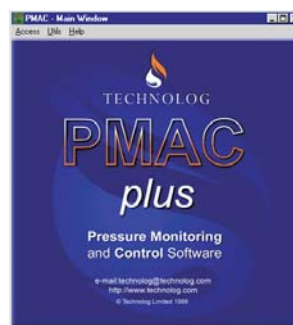
The nationwide GSM network is used to transfer recorded data and alarm messages to a host computer.

Housed in a rugged, waterproof enclosure, Cello CP is suitable for installation in underground chambers or in above-ground kiosks.

- Measures the potential difference between pipe and reference cell
- Self-powered for five years
- Nationwide wireless coverage
- Includes all GSM service charges for typical applications (only available in certain countries)
- Compatible with Technolog's PMAC software
- Sophisticated threshold profile alarm dial-out regimes
- Signal strength survey mode
- Totally portable: no mains power or telephone line connections

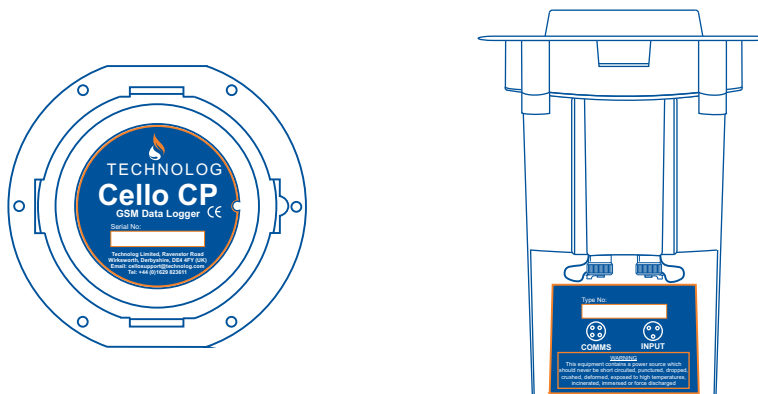


Comprehensive data analysis is provided by Technolog's Windows™- based PMAC software



*Engineering Solutions* for the Utilities

Technolog can also provide a complete installation and maintenance service



<b>Inputs</b>	<p>Channel 1: Voltage</p> <p>Voltage Input: Standard range 0 to -2.5 volts dc. Optional ranges available on request</p> <p>Accuracy/Resolution: +/- 0.5% of range</p> <p>Input Impedance: Greater than 1M ohms</p> <p>Input Filter: 50 Hz ac rejection. Measurement unaffected up to 10V ac rms</p>
<b>Serial Port/Fast Barrier</b>	<p>Type: Full duplex, asynchronous</p> <p>Data Rate: 1200, 2400, 4800, 9600 bps</p>
<b>GSM Modem</b>	<p>Frequency 900 MHz (UK: Vodafone, O2), 1800 MHz (UK: Orange, T-Mobile), 1900 MHz</p> <p>Integral antenna</p>
<b>Data Storage</b>	<p>Type: Solid-state</p> <p>Size: 64K</p> <p>Data Retention: 5 years (life of battery)</p>
<b>Clock</b>	<p>Type: Crystal-controlled calendar clock with leap year adjustment</p> <p>Accuracy: 100 seconds per month maximum error over operating temperature range</p> <p>Synchronisation: Option to synchronise clock to GSM network</p>
<b>Supply</b>	<p>Type: Internally powered by a replaceable lithium battery pack</p> <p>Life: Typical battery life 5 years depending on mode of use</p> <p>Internal backup cell maintains logging and local communications during main battery change</p>
<b>Recording</b>	<p>Recording Interval: Programmable between 1 second and 1 hour</p> <p>Data Storage: Rotating store or store until full</p>
<b>Alarm Dial-Out</b>	<p>High/Low alarms. Continuous, time-window and profile modes of operation. Option to send data more frequently after an alarm</p>
<b>Environmental</b>	<p>Operating Temperature: -20C to +50C</p> <p>Protection Classification: IP68, submersible to 1 meter</p>
<b>Connectors</b>	<p>Military specification, conforming to MIL-C-26482</p>
<b>Mechanical</b>	<p>Dimensions: 191 mm x 140 mm x 150 mm</p> <p>Weight: 1kg</p>

For further information contact:

Technolog Limited  
 Ravenstor Road  
 Wirksworth  
 Matlock  
 Derbyshire DE4 4FY  
 United Kingdom

Tel: +44 (0)1629 823611  
 Fax: +44 (0)1629 824283

E-mail: [technolog@technolog.com](mailto:technolog@technolog.com)  
 Internet: [www.technolog.com](http://www.technolog.com)