

Cello GS

Governor Station Monitoring



When managing gas distribution and transmission networks, it is an essential requirement to monitor and record key parameters throughout the system, such as pressures at a regulating station and critical node points.

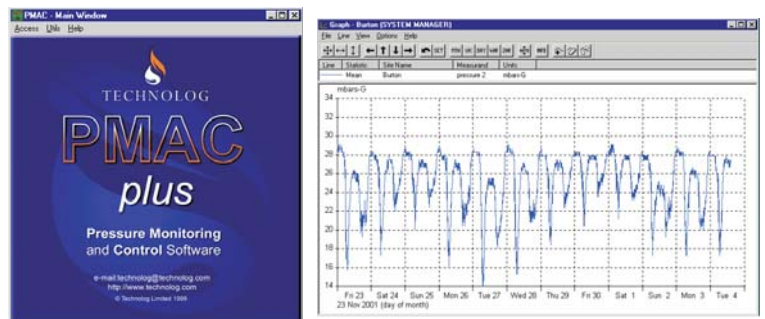
To reduce the frequency of site visits it is desirable to monitor slam-shut valve operation and to filter differential pressure and door operation.

Cello GS uses the GSM network to provide communications, thereby avoiding the inconvenience and expense of telephone lines.

- 128K memory
- Nationwide wireless coverage
- Replaceable internal battery provides sufficient power for up to 5 years
- Pressure, temperature and flow recording options
- Sophisticated profile alarm dial-out regime
- Fully compatible with Technolog's PMAC software
- External dual-band antenna



Comprehensive data analysis is provided by Technolog's Windows™- based PMAC software



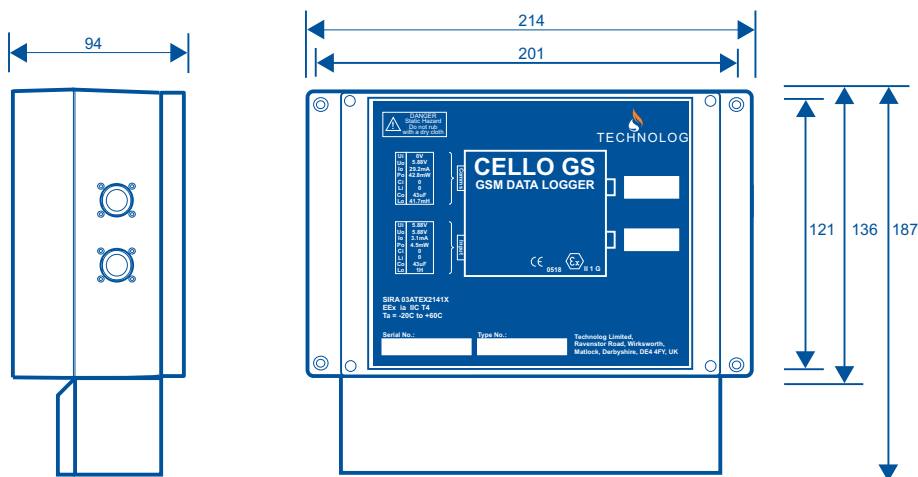
Cello GS is an intrinsically safe, multi-purpose data logger specifically designed for use in the gas industry.



Engineering Solutions for the Utilities

Technolog can also provide a complete installation and maintenance service

Technical Specifications



Certification	Intrinsically safe EEx ia IIC T4 (Ta -20°C - +60°C), Certificate Number: SIRA 03 ATEX 2141X	
Inputs	<p>Channel Types: Pressure, temperature, pulse (flow) and switch closure</p> <p>Pressure: Up to 3 channels, gauge pressure below 10Bar, absolute 10 Bar and above</p> <p>Pressure Input: 0-75mb, 0-100mb, 0-350mb, 0-1bar, 0-2bar, 0-3bar, 0-7bar, 0-10bar, 0-20bar, 0-50bar, 0-70bar</p> <p>Pressure Port: Female ¼ BSP taper thread</p> <p>Temperature: Up to 2 channels (optional). Input from external PT-100 sensors</p> <p>Digital Input: 5 channels (optional). Monitors ON/OFF status of volt free contacts or records flow input</p> <p>Flow Input: 5 channels (optional). Pulses counted over and recorded at pre-set intervals. Maximum rate 10 per second. 16,000 maximum per logging interval</p> <p>Accuracy/Resolution: +/- 0.5% of range</p>	
Serial Port/Fast barrier	Type: Full duplex, asynchronous	Data Rate: 1200, 2400, 4800, 9600 bps
GSM Modem	Frequency 900 MHz (Vodafone, Cellnet), 1800 MHz (Orange, One2One). External antenna. 1900 MHz option available	
Data Storage	<p>Type: Solid-state</p> <p>Size: 128K, allocated between channels as required (maximum 64K/channel)</p> <p>Data retention: 5 years (life of battery)</p>	
Clock	<p>Type: Crystal-controlled calendar clock with leap year adjustment</p> <p>Accuracy: 100 seconds per month maximum error over operating temperature range</p> <p>Synchronisation: Option to synchronise clock to GSM network</p>	
Supply	<p>Type: Internally powered by an approved replaceable lithium battery pack</p> <p>Life: Typical battery life is 5 years depending on mode of use</p> <p>Internal backup cell maintains logging and local communications</p>	
Recording	<p>Recording Interval: Programmable between 1 second and 1 hour</p> <p>Logging Method: Time-based</p> <p>Data Storage: Rotating store or store until full</p>	
Sampling	Point sampling or 1 second sampling and mean data storage	
Alarm Dial-Out	High/Low alarms independently programmable on each channel. Continuous, time-window and profile operating modes. Option to update more frequently after an alarm	
Environmental	<p>Operating Temperature: -20 C to +50 C</p> <p>Protection Classification: IP54</p>	
Connectors	<p>Communications: M12, 4-pole, single keyway, stainless steel</p> <p>Digital, Flow and Temperature Input: 19-way MIL-C-264</p>	
Mechanical	<p>Dimensions: 214 mm x 190 mm x 94 mm (excluding antenna)</p> <p>Weight: 1.3 kg</p>	

For further information contact: **Technolog Limited**
 Ravenstor Road
 Wirksworth
 Matlock
 Derbyshire DE4 4FY
 United Kingdom

Tel: +44 (0)1629 823611
 Fax: +44 (0)1629 824283

E-mail: technolog@technolog.com
 Internet: www.technolog.com