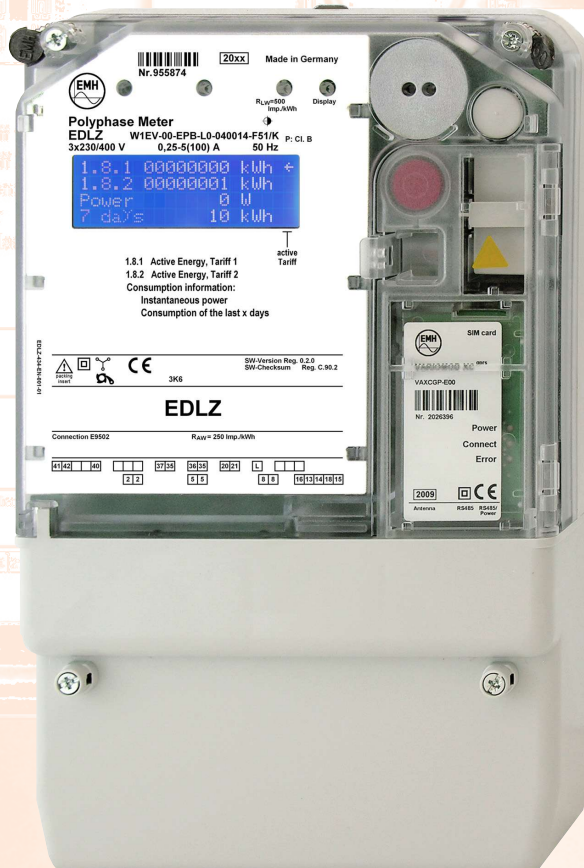


Technical Specification

- ✓ Meets the requirements acc. to EDL21 / EDL40
- ✓ Pluggable communication module
- ✓ Optional with buffer battery
- ✓ Load profile capable
- ✓ **With EC type-examination certificate** acc. to directive 2004/22/EG (MID = **M**asuring **I**nstrument **D**irective)



EDLZ

Domestic meter acc. to EDL21 / EDL40
with load switching (option)

EMH Elektrizitätszähler
GmbH & Co KG
Südring 5
19243 Wittenburg
GERMANY
Tel. +49 38852 645-0
Fax +49 38852 645-129
E-mail info@emh-meter.de
Web www.emh-meter.de

EN Edition: 28.08.2009
EDLZ-DAB-E-1.00

Domestic meter EDLZ

Electricity meter for measuring of active energy with load switching (option)

Voltage	4-wire meter	3x230/400 V
Current		5(100) A
Frequency		50 Hz
Accuracy	active energy	Cl. B acc. to DIN EN 50470-1, -3 (Cl. 1 acc. to IEC 62053-21)
Measuring types	active energy	+A, optional -A
Meter constants	LED output	500 Imp./kWh 250 Imp./kWh
Energy registers		2 tariff registers (T1 / T2)
Load profile	memory depth registering period registering type	up to 15 months 15 min energy
Real Time Clock	accuracy synchronisation running reserve capacitor	within ± 5 ppm via data interface > 10 days
Ripple control receiver (option)	number of channels telegrams	6 all common telegrams
Control input	number system voltage	1, for external tariff switching 230 V AC
Display	display version height of digits	alphanumeric display 4 x 20 characters, 70,4 mm x 20,8 mm, as static blue display for representation of tariffs (T1 / T2), instantaneous power and consumption of the last 1, 7, 30 and 360 days 4 mm
Operation	mechanical button	for operation of display
Data interfaces	optical data interface electrical data interface data protocols	optical data interface D0 (Mode C up to 19200 baud) RS485 DIN EN 62056-21
Communication module (plugable)	modem data protocols maximum transmission rate	GPRS / GSM, Ethernet, Analog DIN EN 62056-21 up to 19200 baud (fixed or Mode C)
Outputs (option)	number Opto-MOSFET	max. 2 max. 250 V AC/DC, 100 mA (make contact)
Power consumption per phase (Basic meter)	voltage path current path	< 10 VA / < 2 W < 4 VA
Temperature range	specified operating range limit range for operation, storage and transport	-25°C...+55°C -40°C...+70°C
Housing	dimensions class of protection degree of protection housing/terminal block housing material fire characteristics	approx. 180 x 285 x 80 (W x H x D) mm II IP 51 / IP 31 polycarbonate glass-fibre-reinforced, without halogen, recyclable acc. to DIN EN 62052-11
Weight		max. 1,8 kg
Further features	buffer battery (option) manipulation recognition (option) load switching (option)	battery for meter read out via the optical interface and reading the display without power recognition of opening the meter- and terminal cover and recognition of electromagnetic interferences per command, call-up button or exceeding of a power threshold

Product specifications are subject to change without notice.



EMH Elektrizitätszähler GmbH & Co KG
Südring 5 • 19243 Wittenburg • GERMANY

Telephone +49 38852 645-0 • Fax +49 38852 645-129
Web www.emh-meter.de • E-mail info@emh-meter.de