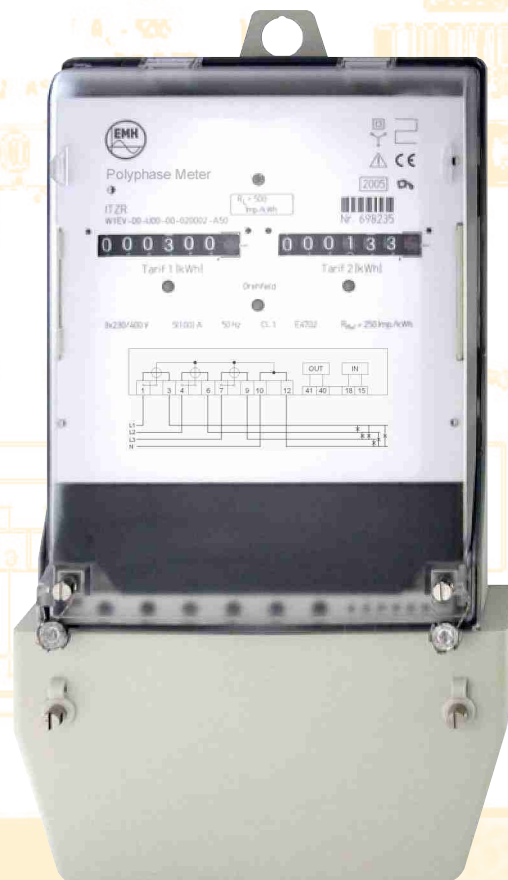


Technical Specification

- ✓ Up to 2 tariffs
- ✓ Optionally available as a bidirectional energy meter
- ✓ Optional with measurement of absolute value IWI
- ✓ Drum registers, each with 7 drums



ITZR

Digital Tariff Meter

with drum registers

EMH Elektrizitätszähler
GmbH & Co KG

Südring 5
D-19243 Wittenburg

Tel. +49 - (0)3 88 52 - 645 - 0
Fax +49 - (0)3 88 52 - 645 - 29

Email info@emh-meter.de
Internet www.emh-meter.de

Edition: 12. May 2005
ITZ-DAB-E-1.00

Digital Tariff Meter ITZR with drum registers

Electricity Meter for measuring active energy for billing purposes

Voltage	4-wire meter	3x230/400 V, 3x220/380 V, 3x58/100 V, 3x63/110 V, 3x115/200 V 3x127/220 V, 3x132/230 V
Current		5(60) A, 5(85)A, 5(100) A, 10(60) A, 10(65) A, 10(100) A; 1(6) A, 5II1 A, 5 A
Frequency		50 Hz, 60 Hz
Accuracy	active energy	Cl. 2 accord. to IEC 62053-21, Option: Cl. 1
Measuring types	active energy	W+ (with non-reverse ratchet), Option: W+/W- and absolute value IWI
Meter constants	LED (Imp./kWh) output (Imp./kWh)	500 - 40 000 (depending on meter type) 250 - 20 000 (depending on meter type)
Energy registers	maximum number	2 tariff register
Control inputs	system- or low voltage	max. 2
Drum registers	maximum number number of digits digitness 100 A digitness 60 A, 100 A digitness 5II1 A, 5 A digit size	2 7 7.0 6.1 5.2 3 x 5 (W x H) mm
Outputs	maximum number S0 OptoMOSFET relay high load relay	2 max. 27 V DC, 27 mA max. 250 V AC/DC, 100 mA (make- or break contact) max. 250 V AC/DC, 100 mA max. 250 V AC/DC, 10 A
Energy supply	switched-mode power supply mains buffering time	3-phase from the measuring voltage > 200 ms
Power consumption per Phase (Basis meter)	voltage path current path	< 1.1 VA / 0.4 W < 0.03 VA
EMC-characteristics	isolation resistance surge voltage resistance against HF-field	isolation: 4 kV AC, 50 Hz, 1 min EMC: 4 kV, impulse 1.2/50 µs, 2 Ω ISO: 6 kV, impulse 1.2/50 µs, 500 Ω (measuring paths and in- and outputs) optional ISO: 8 kV, impulse 1.2/50 µs, 2 Ω (measuring paths and inputs), 6 kV, impulse 1.2/50 µs, 500 Ω (outputs) 30 V/m (under load)
Temperature range	operating / limit storage and transport	-25°C...+60°C / -40°C...+70°C -40°C...+70°C
Relative humidity		90% at 40°C, non-condensing
Housing	dimensions class of protection degree of protection: housing degree of protection: terminals material fire characteristics weight	approx. 178 x 328 x 61 (W x H x D) mm 2 IP 51 IP 31 polycarbonate glass-fibre-reinforced, recyclable flame-inhibiting (without halogen) up to 60 A approx. 1.15 kg up to 100 A approx. 1.35 kg

Product specifications are subject to change without notice!

