



HEPA filters RS series filters of the type RS with aluminium frame

description

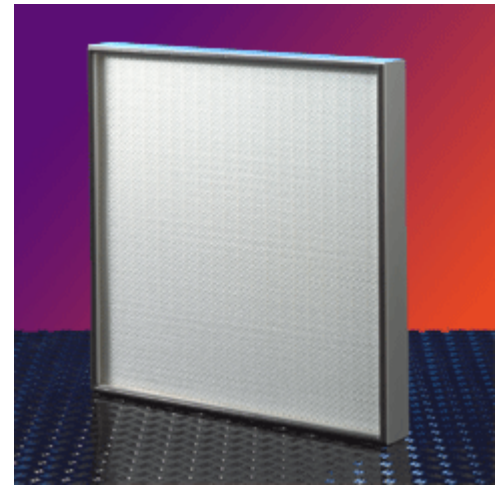
EMW filters of the type RS meet all demands of a HEPA filter. All filters are inspected before delivery. The pleated media in aluminium frame is offered in all common dimensions. High quality, wet layed glass fibre media is used for the filters. To make the filters leakproof the filter packages are cast into the frame material.

characteristics

- filter classes H10 – H14 according to DIN EN 1822
- absolute stability at 100% relative humidity
- max. operating temperature up to 80 °C
- leakage free casting of filter media inside frame
- frame made of anodised aluminium profiles
- standard including one side endless foamed sealing
- standard including both sides powder coated grid

fields of application

- air handling units
- laboratories
- clean room work benches
- processing air in the pharmaceutical industry
- air conditioning units for production halls
- individual offtake for work benches



dimensions

RS 66 : depth of frame 66 mm
RS 90 : depth of frame 90 mm
RS 117 : depth of frame 117 mm

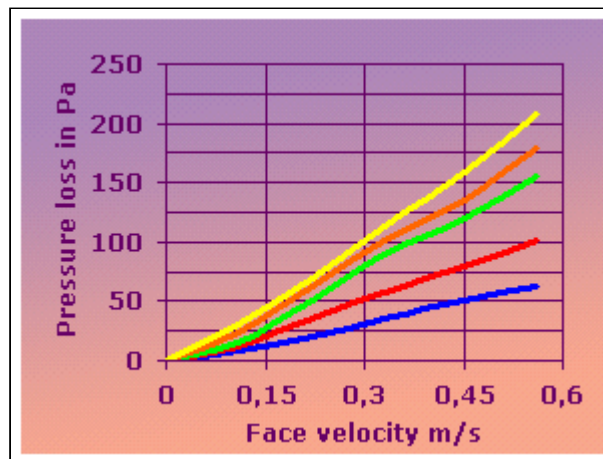
Various offered dimensions of frames kindly see under [technical data](#)

Further dimensions you will receive on request



filter data of RS 66, 66 mm depth of frame, H10 – H14 according to DIN EN 1822:

type	dimmension [mm]	air flow [m ³ /h]	pressure loss [Pa]				
			H 10	H 11	H 12	H 13	H 14
RS 66	305x305	150	50	80	120	135	158
RS 66	305x610	300	50	80	120	135	158
RS 66	305x762	375	50	80	120	135	158
RS 66	305x915	450	50	80	120	135	158
RS 66	610x610	600	50	80	120	135	158
RS 66	610x762	750	50	80	120	135	158
RS 66	610x915	900	50	80	120	135	158
RS 66	610x1220	1200	50	80	120	135	158
RS 66	610x1525	1500	50	80	120	135	158
RS 66	610x1830	1800	50	80	120	135	158
RS 66	762x762	940	50	80	120	135	158
RS 66	762x915	1120	50	80	120	135	158
RS 66	762x1220	1500	50	80	120	135	158
RS 66	762x1525	1850	50	80	120	135	158
RS 66	762x1830	2250	50	80	120	135	158
RS 66	915x915	1330	50	80	120	135	158
RS 66	915x1220	1800	50	80	120	135	158
RS 66	915x1525	2250	50	80	120	135	158
RS 66	915x1830	2700	50	80	120	135	158





filter data of RS 90, 90 mm depth of frame, H10 – H14 according to DIN EN 1822:

type	dimmmension [mm]	air flow [m ³ /h]	pressure loss [Pa]				
			H 10	H 11	H 12	H 13	H 14
RS 90	305x305	150	39	60	83	103	117
RS 90	305x610	300	39	60	83	103	117
RS 90	305x762	375	39	60	83	103	117
RS 90	305x915	450	39	60	83	103	117
RS 90	610x610	600	39	60	83	103	117
RS 90	610x762	750	39	60	83	103	117
RS 90	610x915	900	39	60	83	103	117
RS 90	610x1220	1200	39	60	83	103	117
RS 90	610x1525	1500	39	60	83	103	117
RS 90	610x1830	1800	39	60	83	103	117
RS 90	762x762	940	39	60	83	103	117
RS 90	762x915	1120	39	60	83	103	117
RS 90	762x1220	1500	39	60	83	103	117
RS 90	762x1525	1850	39	60	83	103	117
RS 90	762x1830	2250	39	60	83	103	117
RS 90	915x915	1330	39	60	83	103	117
RS 90	915x1220	1800	39	60	83	103	117
RS 90	915x1525	2250	39	60	83	103	117

